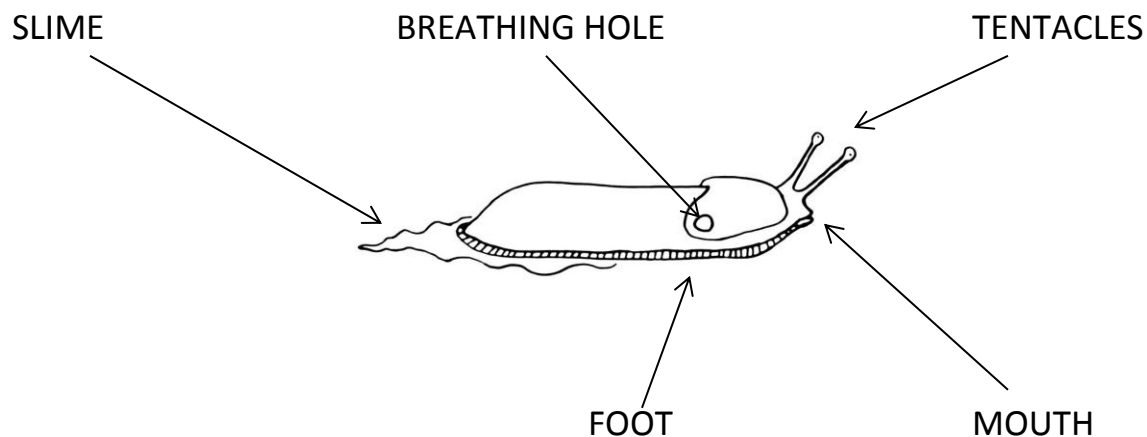


### **In-Class Activity: The Structure and Function of Banana Slugs**

Thank you for participating in our Howland Hill Outdoor School distance-learning program! There are two other .pdf files included with these instructions. One file has a picture of a banana slug. This is intended to be colored and/or cut out by the students.

The other file has a series of cards that students can color and cut out as well. The cards list the different structures of the banana slug described in the park ranger video, as well as the different functions that those structures have. The purpose of the exercise is to have students label the structures of a banana slug and choose the appropriate function each structure performs for the slug.

The correct labels for the structures of the banana slug are shown below. You can have your students label the structures with string, yarn, or marker and paste everything on to a larger sheet of paper. Or, you could have students color the banana slug but not cut it out, and paste all the structures and functions to that piece of paper. Or, you can do something entirely different to make this fit your curriculum and style.



The correct answers for the functions of these structures are listed below:

SLIME – STAY SAFE

TENTACLE – FIND FOOD

FOOT – MOVE AROUND

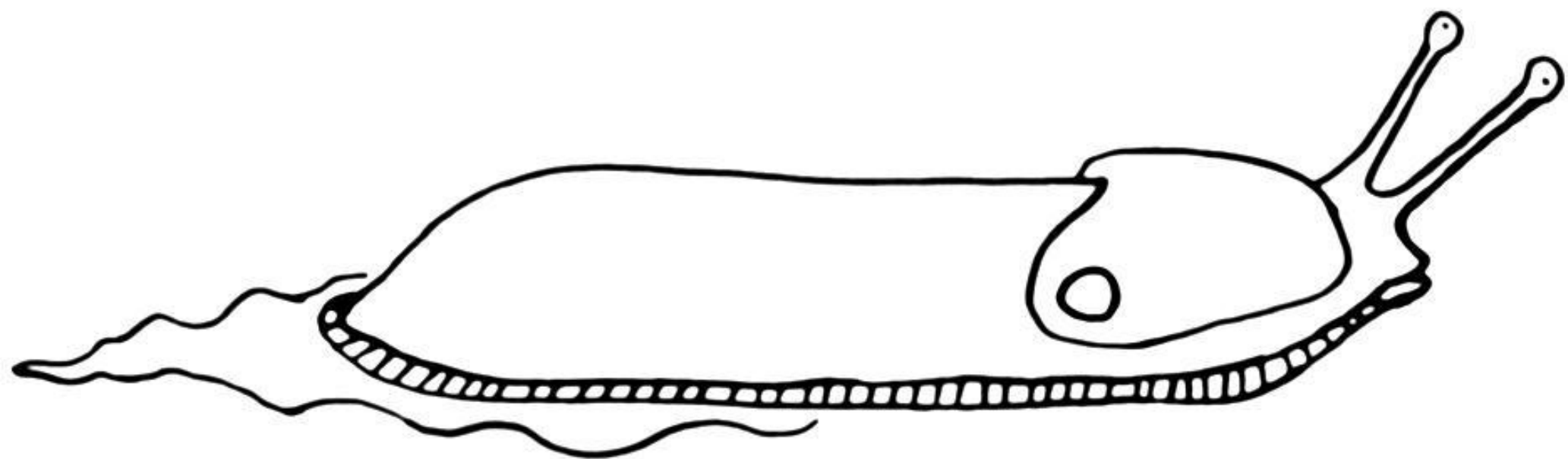
MOUTH – EAT FOOD

BREATHING HOLE – BREATHE

Be sure to submit our feedback form so we can improve on this program in the future. Thank you for all the work you do in educating our future generations, and we hope you get a chance to visit us here at Redwood National and State Parks.

- Howland Hill Outdoor School Park Rangers -





SLIME

TENTACLE

FOOT

MOUTH

BREATHING  
HOLE

STAY SAFE

FIND FOOD

BREATHE

EAT FOOD

MOVE  
AROUND